

QUICK FACTS:

LOCATION:

Northeast Utah

THE RIVER IS:

Warm and brown

THE SCENERY IS:

Pink sandstone at the start, then tall and dark Vishnu schist in the canyon.

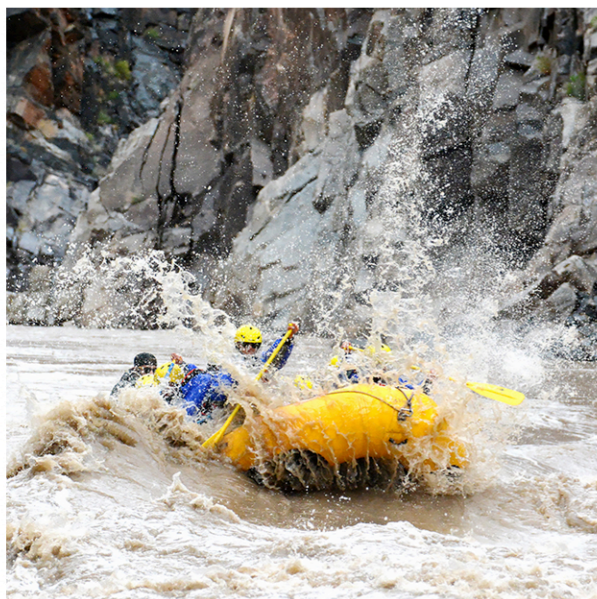
THE WHITEWATER IS:

Technical and steep in the heart of the canyon - one rapid right after the next!

RIVER STATS:

LENGTH (MILES): 48

EXPEDITION DAYS: 4



WESTWATER

CANYON

If you're short on time, but long for adventure, Westwater is your place. Typically run as a 2-day expedition, GOALS offers an extended experience in "Westy" by launching further upstream than most and exploring the calm waters of Ruby and Horsethief Canyons before entering Westwater's exciting rapids. You'll get accustomed to "river life" on the first 2 days-enjoying time in rafts, inflatable kayaks, and perhaps even stand-up paddle boards. Then, you'll discover why National Geographic named Westwater Canyon the "World's Best Short Whitewater Trip" on days 3 and 4.

In addition to the excitement of rapids like Funnel Falls, Skull, Big Hummer, and Sock-It-To-Me, Westwater explorers float past unique historic and geologic features that can only be viewed from the river. We'll hike to a cave used by famous western outlaws that still contains relics left behind by the men who used it to evade capture by lawmen. Further downstream, we'll lay eyes and hands on some of the oldest exposed rock on our planet, as the dark Vishnu Schist that forms much of the canyon walls is over 1.6 billion years old. You'll be in and out of Westwater before you know it - but the excitement you've packed into 4 days will have you planning a return before you even get to the take-out ramp!

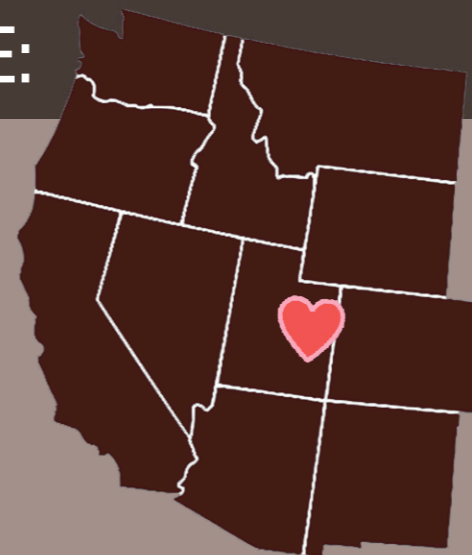


5 REASONS TO CHOOSE WESTWATER CANYON:

1. Lots of excitement in a short period of time.
2. Fun rapids names.
3. Nat Geo called it the best, and you want to see why.
4. Fall colors on the cottonwood trees.
5. Whitewater, history, and geology - it's all there!

KIDS LOVE WESTWATER BECAUSE:

- The expedition changes so much throughout - relaxing to excitement.
- We run it in the fall, when the levels, temps, and fall colors are all ideal.
- It's a chance to challenge fun rapids in a relatively short expedition.
- The outlaw history is entertaining.
- It's easy to get to- and so hard to leave.



2021 EXPEDITIONS

JULY 27 - 30

MIDDLE SCHOOL (Grade 6-8). \$1330

AUGUST 15 - 18

HIGH SCHOOL (Grade 9-12). \$1330

SEPTEMBER 15 - 18

HIGH SCHOOL (Grade 9-12). \$1330

